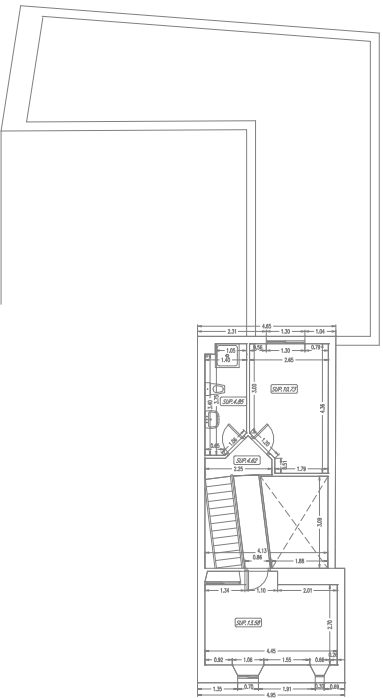
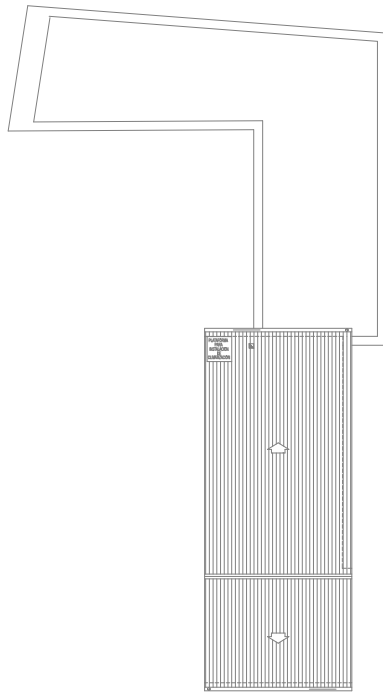


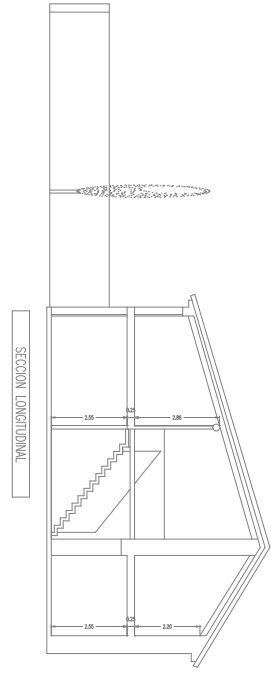
PLANTA BAJA



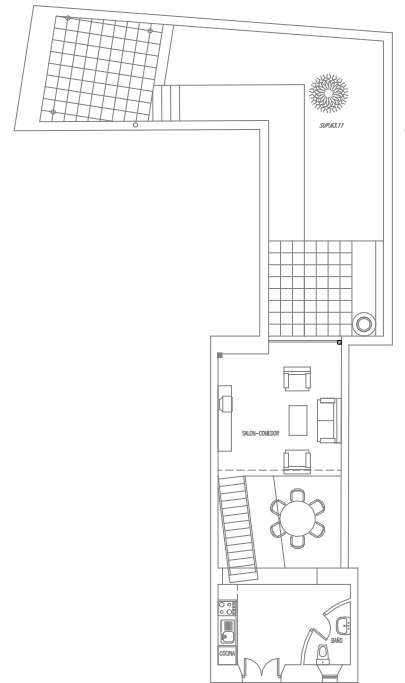
PLANTA PRIMERA



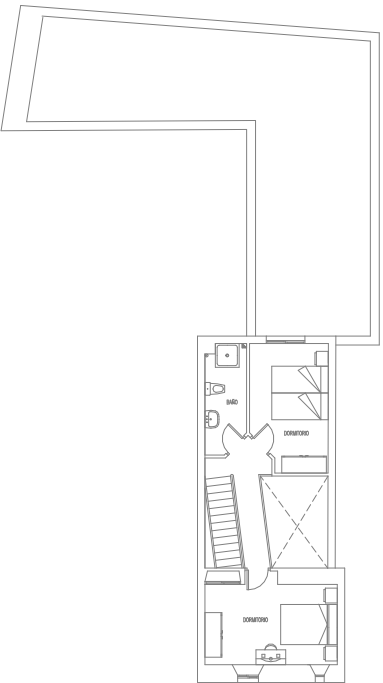
CUBIERTA



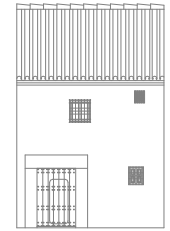
SECCION LONGITUDINAL



PLANTA BAJA



PLANTA PRIMERA



ALZADO C/ GRAJETA DE SANTO TOMAS

| ADAPTACION CUADRO DE SUPERFICIES |             |                |           |
|----------------------------------|-------------|----------------|-----------|
|                                  | PLANTA BAJA | PLANTA PRIMERA | TOTAL     |
| SUPERFICIE UTIL CERRADA          | 45.01 M2    | 33.78 M2       | 78.79 M2  |
| SUPERFICIE UTIL EXTERIOR         | 63.11 M2    |                | 63.11 M2  |
| SUPERFICIE CONSTRUIDA            | 55.26 M2    | 45.47 M2       | 100.73 M2 |

C/ GRAJETA DE SANTO TOMAS

# P. DE ADAPTACION DE EDIFICIO PARA USO DE APARTAMENTOS HOTELEROS EN UBEDA.

PROMOTOR: MIGUEL SANCHEZ RUIZ

ARQUITECTO: MIGUEL SANCHEZ RUIZ

COTAS y DISTRIBUCION

E.1/100

